

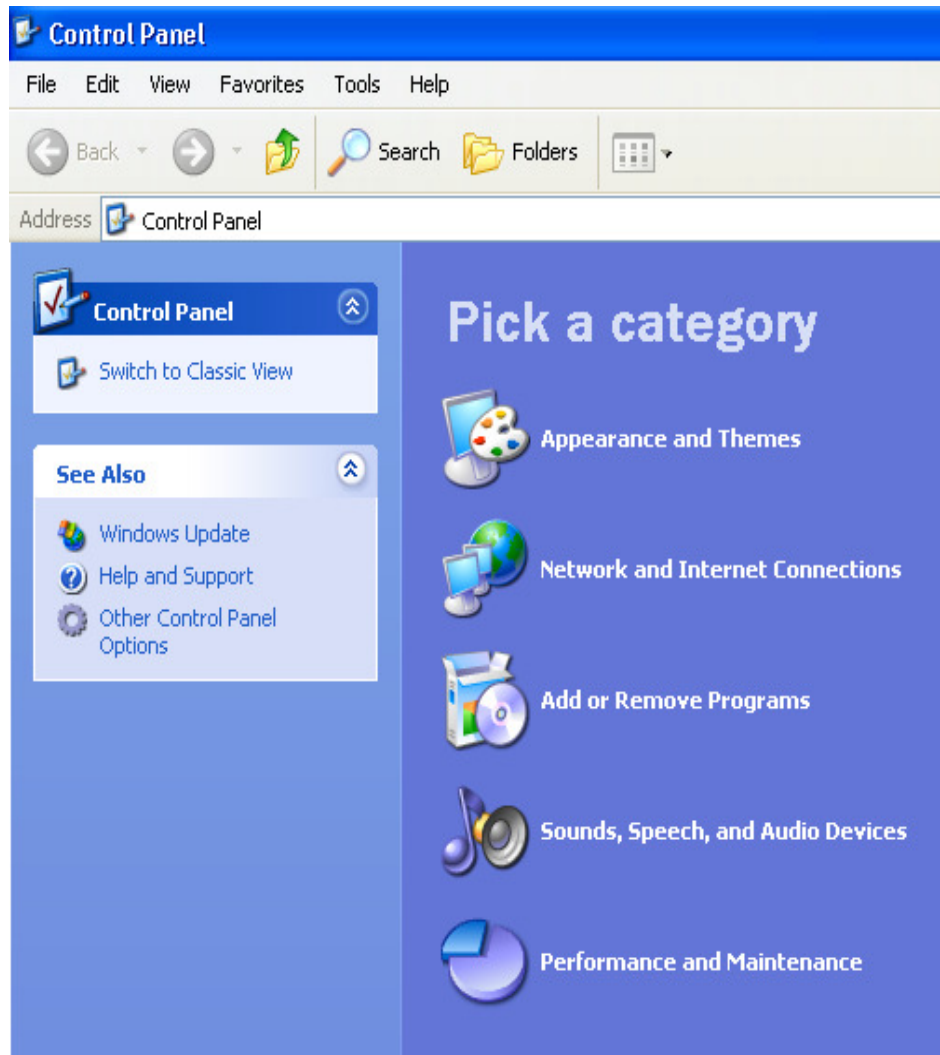
Uninstalling unused devices through Windows device manager

When installing the StenoCast Ez USB Receiver on older computers or computers that have many devices installed on them, it is possible the receiver will be assigned a Com port too high for Certain CAT software programs to use. In this case, it's a good idea to remove any unused or unnecessary devices. In this guide we will show you how to locate those devices and remove them. Let's get started.

First, we must enable Windows to see the unused devices in Windows Device Manager. To do this, click the Start button in the Windows Taskbar. Then select the Control Panel; or if you are using Windows 2000, Click Start, select settings from the menu, and then select Control Panel from the menu.



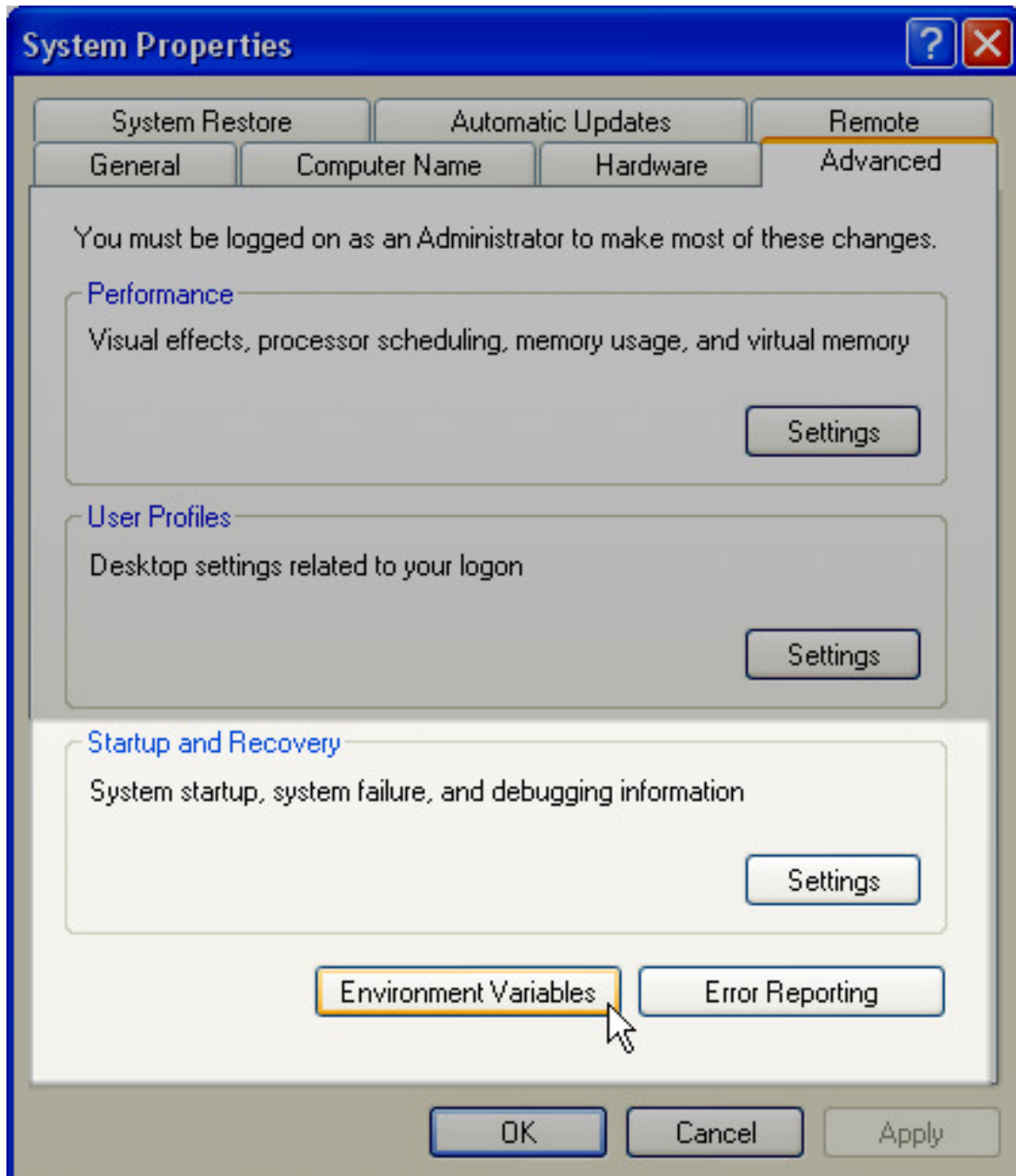
- Once in the Control Panel, make sure that the Control Panel is in Classic View. If your Control Panel looks like the picture to the right, then select "Switch to Classic View" from the menu on the left.



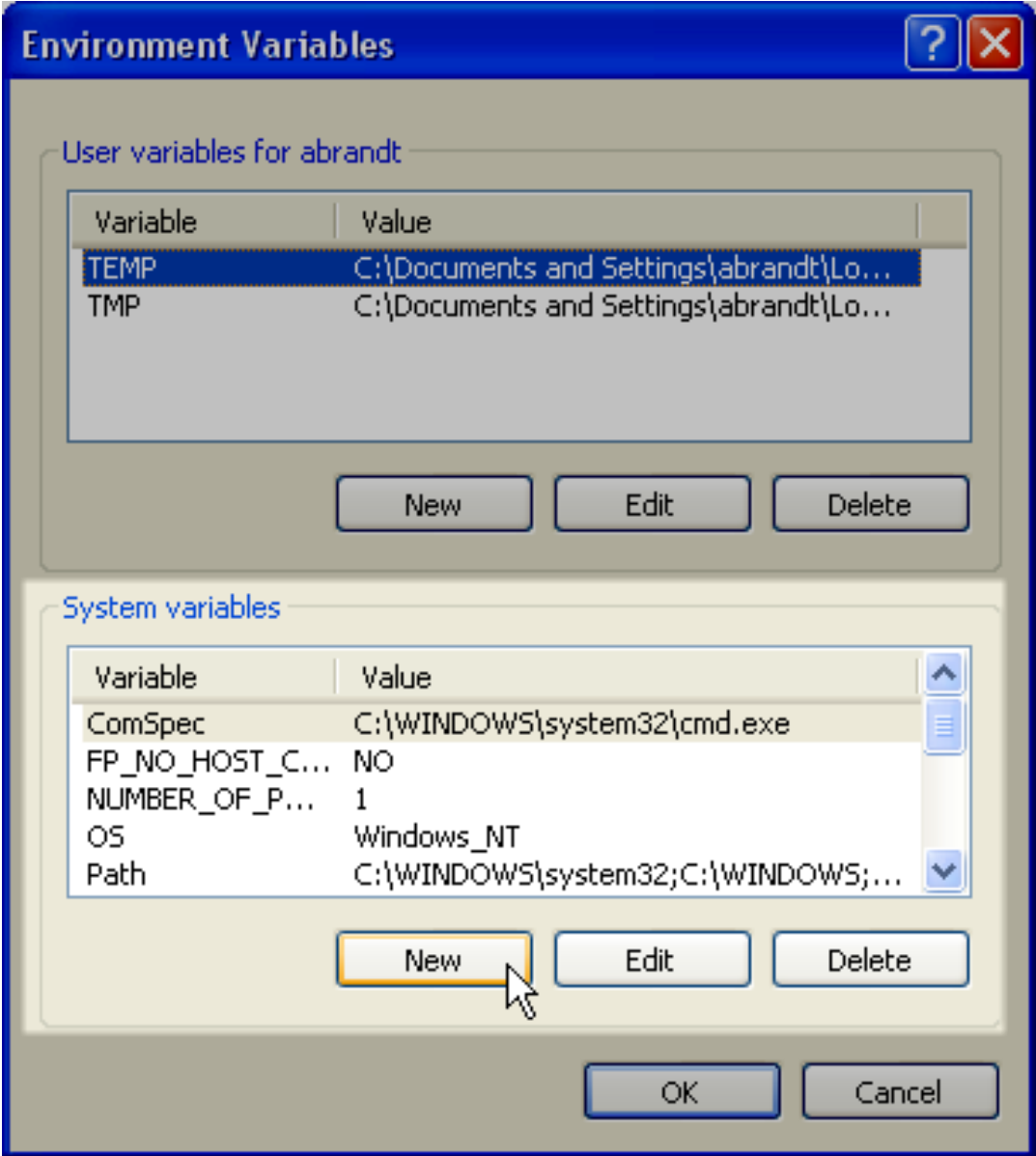
- Then double-click the System Icon



- Once the System Properties window opens, click the Advanced tab. Then click the "Environment Variables" button at the bottom of the window.



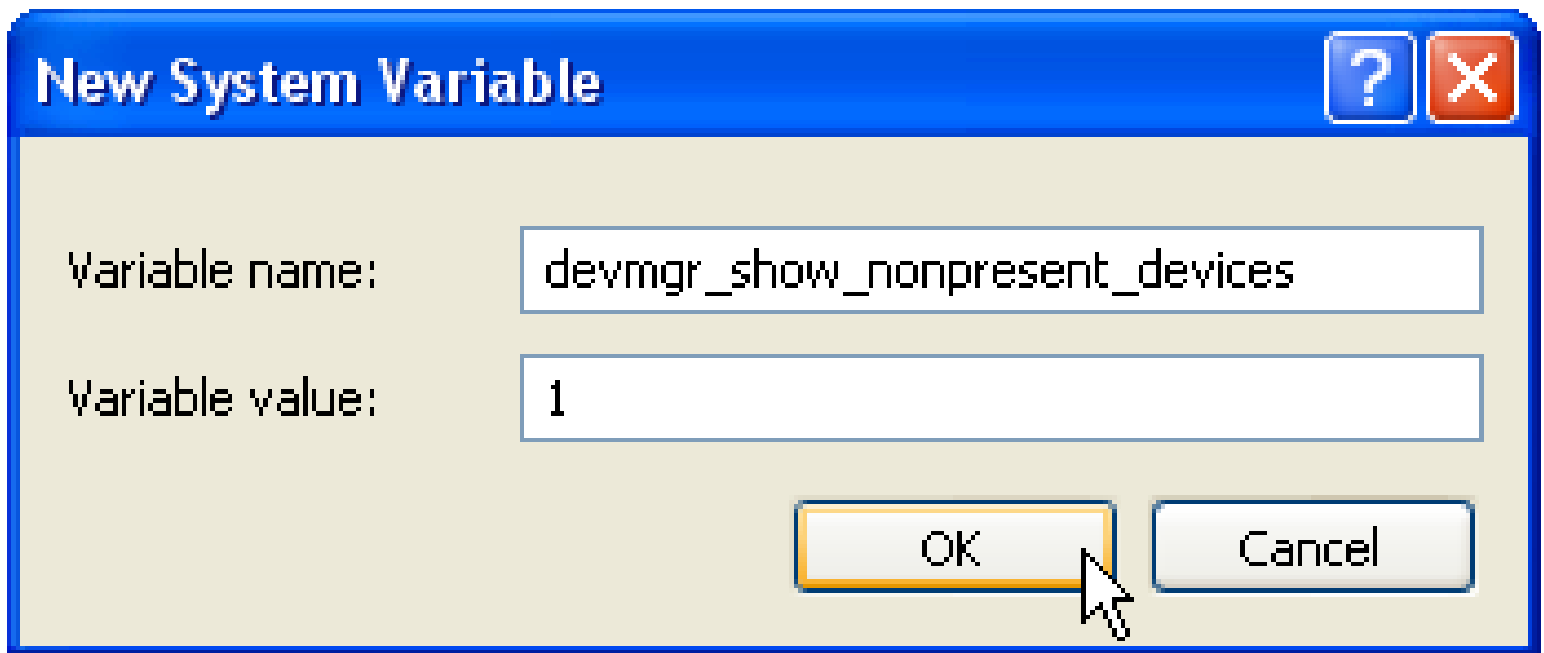
When the Environment Variables window opens, it will look like the picture below. Click on the "New" button in the "System Variables" section.



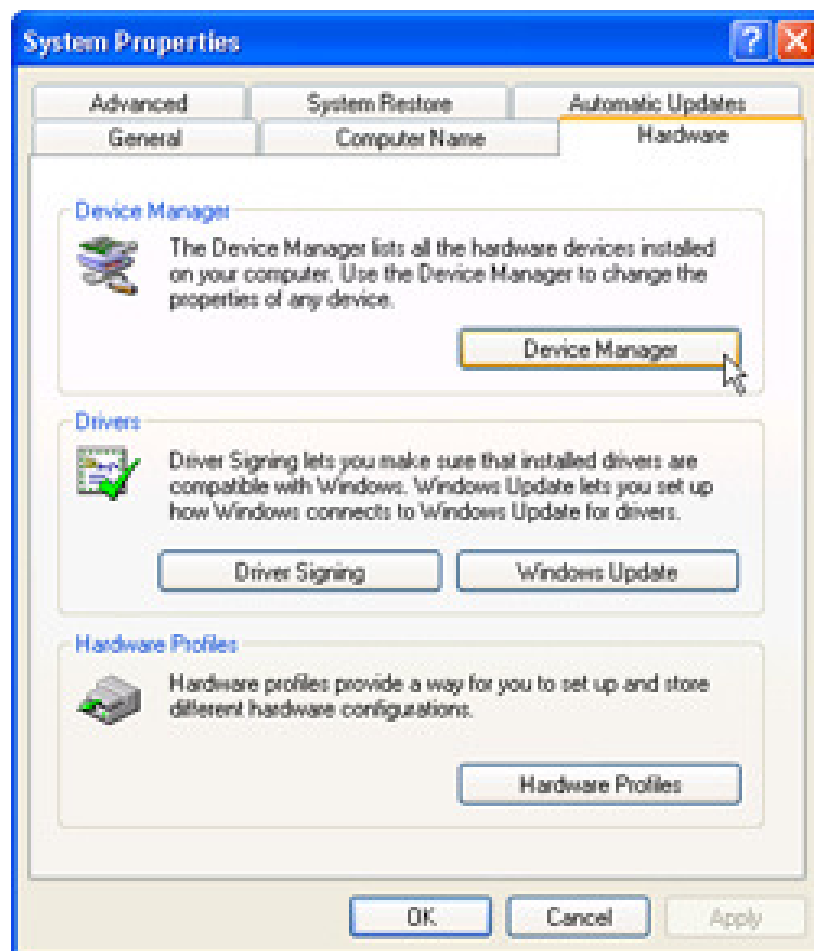
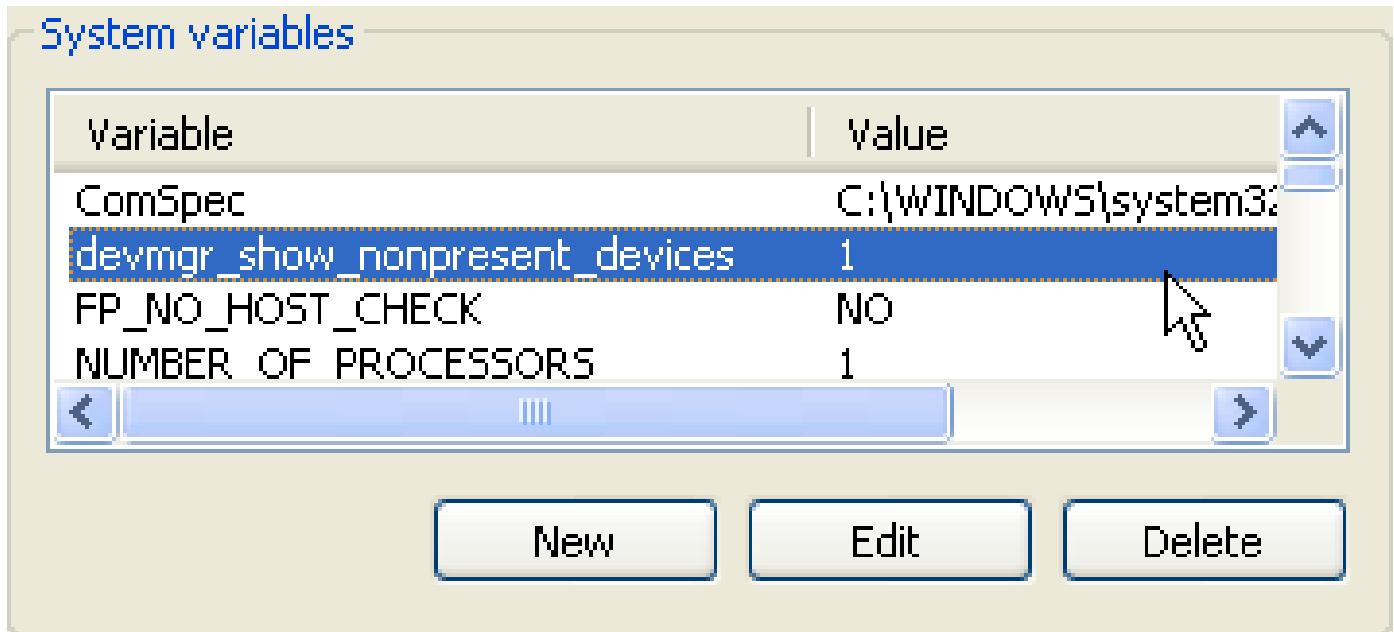
Once the "New System Variable" window opens, enter the following information EXACTLY how it is written. The window will then appear as the picture below.

- Variable name: devmgr_show_nonpresent_devices
- Variable Value: 1

Once you have entered the information, click the "OK" button.



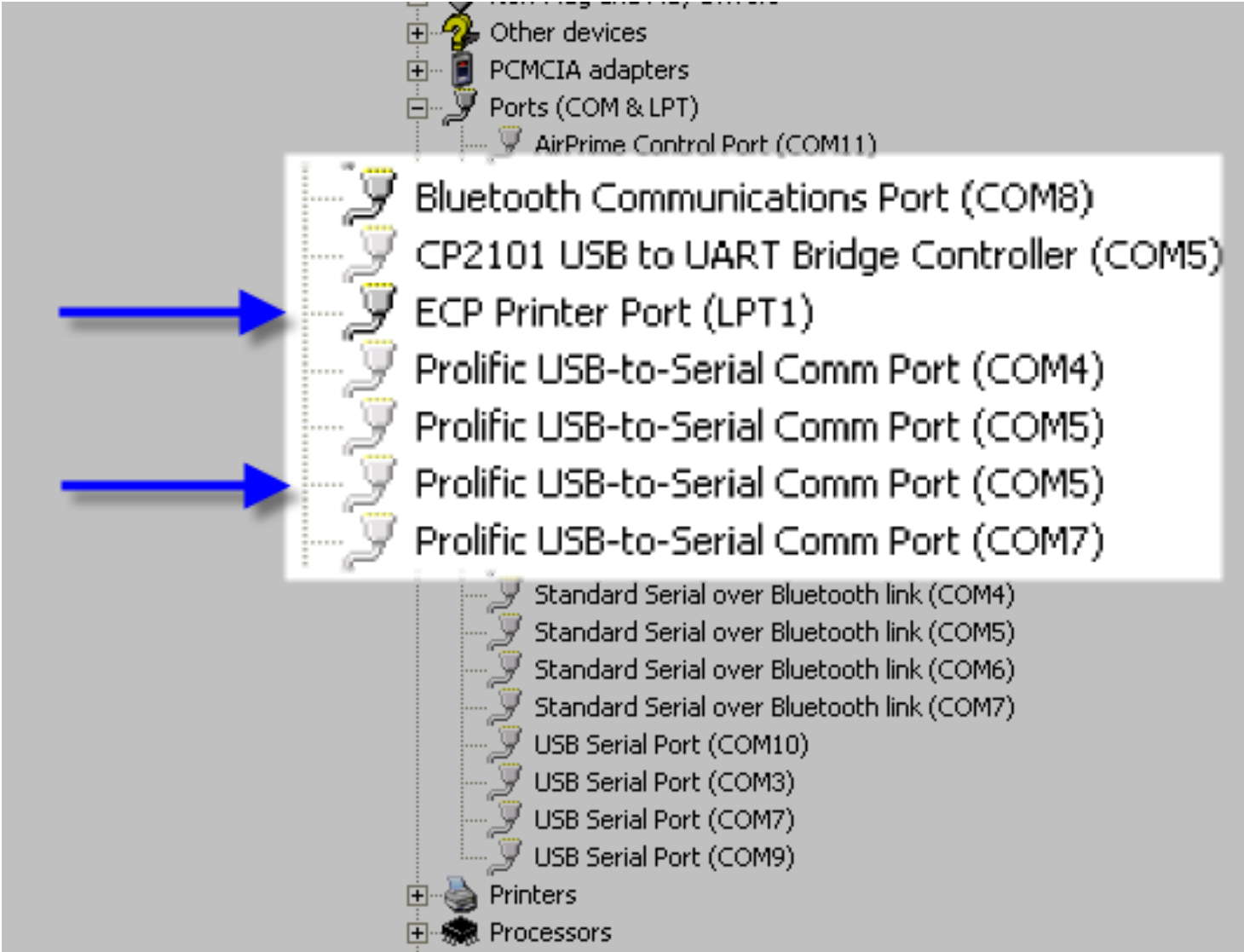
After you have added the new system variable, confirm that the **devmgr** variable is visible on the System Variables list. Next click "OK" to exit the Environment Variables window. Then select the "Hardware" tab and click the "Device Manager" button.



When the Device Manager opens, click "View" on the menu bar and select "Show hidden devices." This will tell the Device Manager to list all registered devices (in use or not) to appear in the Device Manager list. Next, click the + sign next to the ports section to expand the device tree.



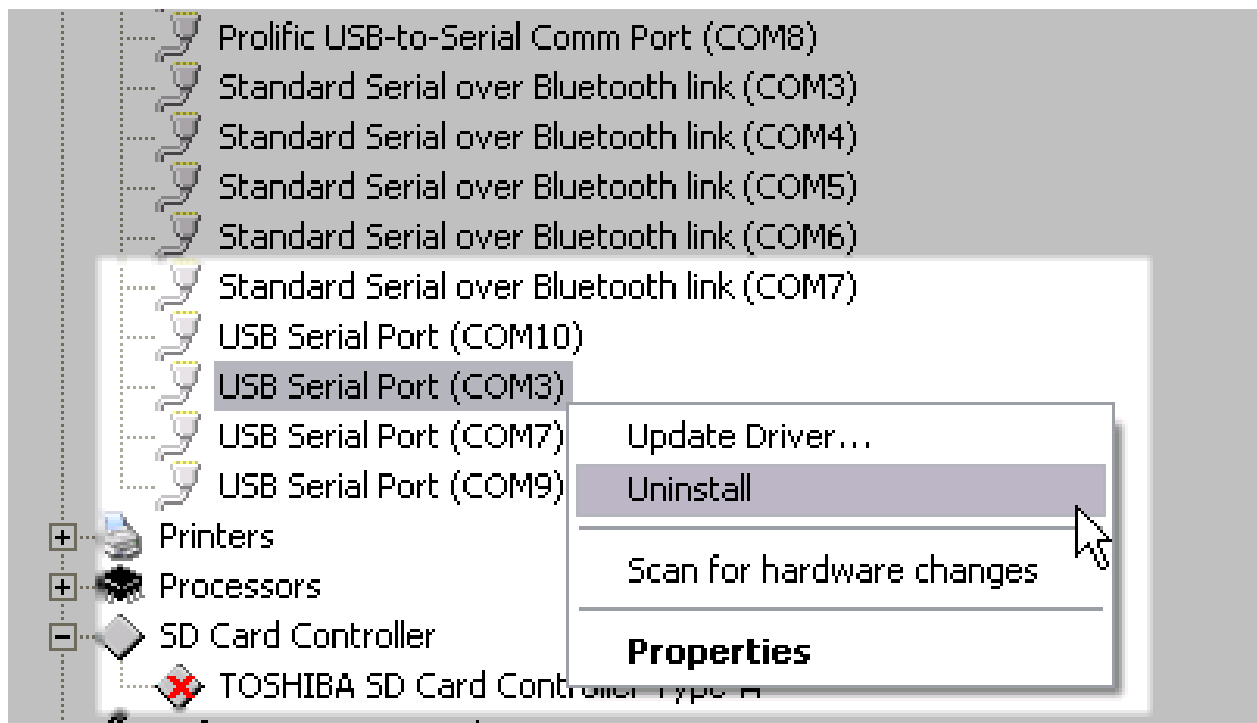
If your computer is older or perhaps has built-in Bluetooth you will notice many more devices than you remembered on this list. Looking at the picture below, you will notice some of the plug icons are darker than others in the device list. The darker plugs represent devices that are ready to use and the lighter plugs are devices that are not currently plugged in or ready to use.



Typically if your StenoCast Ez Receiver has installed on a high Com port, it is because devices that you no longer use have reserved the lower Com ports.

To remove a device you no longer use, right click the device and select uninstall from the menu. If Windows asks you "Are you sure you want to uninstall the device," just click "OK." Remove any device that you no longer use. If you are unsure about which devices you use and which devices you don't use, check with an IT representative or someone familiar with Windows.

Do not uninstall anything that says "Modem" or "Toshiba BT port."



Once you have uninstalled all unnecessary devices, click on the link below for instructions on how to move your StenoCast receiver to a lower Com port.

[Changing the Com port of the StenoCast Ez USB Receiver](#)